

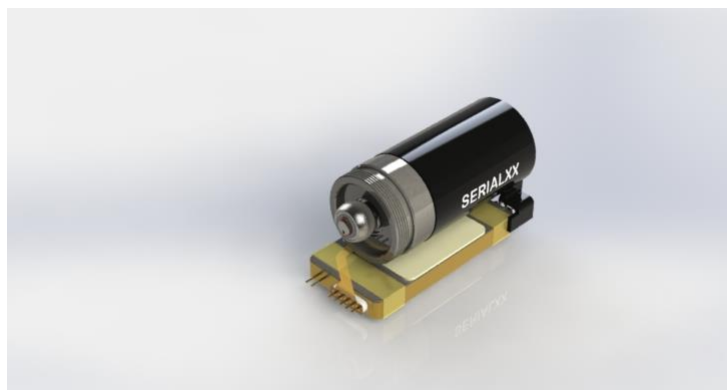


## CMI-8048-04

### Surgical Hand Tool Device Replacement Motor/Driver

#### Description:

The CMI-8048-04 Brushless DC Motor and Driver assembly is designed dimensionally and electrically as a drop-in replacement for popular OEM surgical hand tool devices. The motor and driver are tested as an assembly and a certificate of compliance is provided with each motor and driver assembly. This assembly is built to last and is covered by a limited warranty.



#### Test Data:

Nominal Voltage:	9.6	V	
Free Speed Current:	0.9 - 3.0	A	
Free Speed RPM:	12,800 - 14,200	RPM	
Current Under Load:	29 - 31	A	@Torque: 23 oz-in
Rotation Under Load:	7,800 - 8,200	RPM	@Torque: 23 oz-in

#### Free Speed Test Data:

Free Speed Current:	1.25	A	
Free Speed RPM:	13,650	RPM	
Current Under Load:	30	A	@Torque: 23 oz-in
Rotation Under Load:	7,930	RPM	@Torque: 23 oz-in