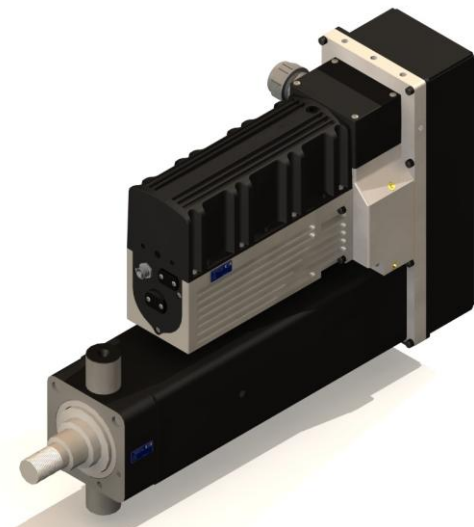




ESAA-50 ACTUATOR

The **ESAA-50** series is a heavy duty Electric screw actuator or “electric cylinder”. These actuators are designed to be “drop in replacement” units for many standard hydraulic cylinders, particularly in applications where precise motion is required or where oil leaks and noisy pumps cannot be tolerated. Key advantages of these actuators stem from the unique qualities of CMI BLDC servo motors*. They incorporate CMI proprietary materials and are very high powered for their respective size and weight. The **ESAA-50** series is highly reliable and designed to operate in tough industrial, military and commercial operating environments, including outdoors in salt spray and wind blown sand. The integral electronics provide servo control and power to the motor in one compact package.

The cylinder half of the actuator is composed of rugged gears, including CMI manufactured planetary and spur gears, and a precision Acme screw. The screw is contained in a “cylinder like” housing which is available with typical NFPA cylinder mounting styles.



FEATURES:

- 13 IPM travel rate; higher speeds available.
- 12,000lbf thrust capacity, higher forces available.
- Cylinder stroke 12”, others available.
- Magneto-restrictive absolute position transducer; no “homing” required.
- Programmable EOT limits.
- Mechanical EOT limit switches not required but available if preferred.
- Non-destructive hard stops both directions.
- Isolated CAN and RS-485 communication interfaces, others optional.
- Motion commands, parameters and status reporting may be communicated via PC or a PLC.
- On board memory can store motion profiles and predefined routines.
- Multi-motor networking, DIP switch addressable.
- Custom programming at factory available.
- User programming GUI available.
- Motor temperature monitoring.
- Programmable torque control.
- Air cooled to 100amps.
- Water cooled to 200+ amps
- Motor status messaging, error reporting and data logging capability.
- Ball and roller screw units and larger sizes available.
- Mil-Spec 810 Compliant

APPLICATIONS:

- Factory Automation
- Military/Aerospace

*** Patent Pending**